

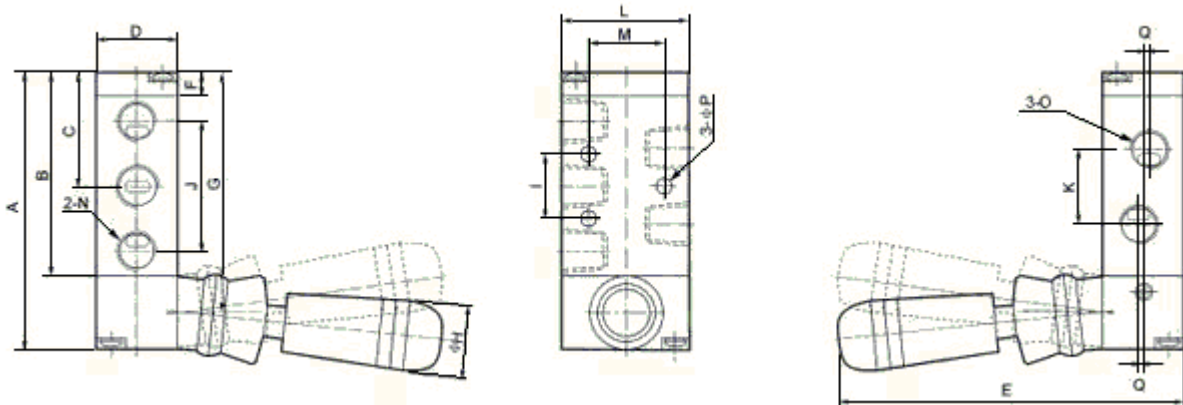
- 1.691 – VPL 5/2 1/8"
- 1.692 – VPL 5/2 1/4"
- 1.696 – VPLR 5/2 1/8"
- 1.697 – VPLR 5/2 1/4"

Válvula a palanca lateral

R = con retención



| Modelo | 1.691 - VPL 5/2 1/8" | 1.692 - VPL 5/2 1/4" | 1.696 - VPLR 5/2 1/8" | 1.697 - VPLR 5/2 1/4" |
|------------------------|---|----------------------|-----------------------|-----------------------|
| Tipo | 5/2 Vías Palanca Lateral Directa Mecánica | | | |
| Fluido | Aire Comprimido 40 Micrones | | | |
| Retención | No | | Sí | |
| Sección | 14 mm ² | 16 mm ² | 14 mm ² | 16 mm ² |
| Caudal | 770 l/min | 880 l/min | 770 l/min | 880 l/min |
| Conexiones | 1/8" | 1/4" Escapes 1/8" | 1/8" | 1/4" Escapes 1/8" |
| Presión de Trabajo | 0 a 8 bar | | | |
| Temperatura de Trabajo | 0 a 60 °C | | | |



| Modelo \ Símbolo | A | B | C | D | E | F | G | H | I | J | K | L | M | N | O | P | Q |
|-----------------------|----|------|------|----|----|-----|------|----|----|----|----|----|----|--------|--------|-----|-----|
| 1.691 - VPL 5/2 1/8" | 76 | 56,5 | 31,5 | 22 | 95 | 6,5 | 66,5 | 18 | 20 | 36 | 21 | 35 | 21 | G 1/8" | G 1/8" | 4,3 | |
| 1.692 - VPL 5/2 1/4" | 76 | 56,5 | 31,5 | 22 | 95 | 6,5 | 66,5 | 18 | 20 | 36 | 21 | 35 | 21 | G 1/8" | G 1/4" | 4,3 | 1,5 |
| 1.696 - VPLR 5/2 1/8" | 76 | 56,5 | 31,5 | 22 | 95 | 6,5 | 66,5 | 18 | 20 | 36 | 21 | 35 | 21 | G 1/8" | G 1/8" | 4,3 | |
| 1.697 - VPLR 5/2 1/4" | 76 | 56,5 | 31,5 | 22 | 95 | 6,5 | 66,5 | 18 | 20 | 36 | 21 | 35 | 21 | G 1/8" | G 1/4" | 4,3 | 1,5 |



Darío Martín Carolina SRL

Cnel. Martiniano Chilavert 680
(1714) Ituzaingó, Buenos Aires, Argentina

Tel: (011) 4661-1955
ventas@dmc-srl.com.ar
www.dmc-srl.com.ar