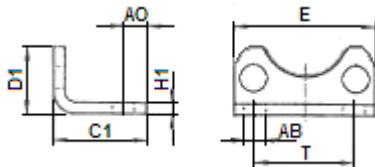


2.150 – PP 32.6      2.153 – PP 63.6  
 2.151 – PP 40.6      2.154 – PP 80.6  
 2.152 – PP 50.6      2.155 – PP 100.6



**Fijación por pie económica**

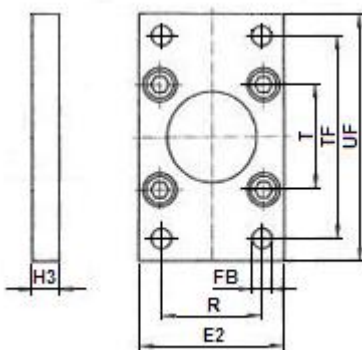


| Código | Ø Cilindro | AB | AO | C1 | D1 | E   | H1 | T  |
|--------|------------|----|----|----|----|-----|----|----|
| 2.150  | 32         | 9  | 10 | 30 | 18 | 50  | 3  | 33 |
| 2.151  | 40         | 12 | 10 | 39 | 20 | 57  | 3  | 37 |
| 2.152  | 50         | 12 | 10 | 39 | 22 | 68  | 3  | 47 |
| 2.153  | 63         | 12 | 12 | 43 | 22 | 80  | 3  | 56 |
| 2.154  | 80         | 14 | 16 | 46 | 32 | 97  | 4  | 70 |
| 2.155  | 100        | 14 | 18 | 48 | 42 | 112 | 4  | 84 |

2.170 – B 32.6      2.173 – B 63.6  
 2.171 – B 40.6      2.174 – B 80.6  
 2.172 – B 50.6      2.175 – B 100.6



**Fijación por brida económica**



| Código | Ø Cilindro | E2  | FB | H3 | R  | TF  | UF  | T  |
|--------|------------|-----|----|----|----|-----|-----|----|
| 2.170  | 32         | 42  | 7  | 10 | 34 | 58  | 72  | 33 |
| 2.171  | 40         | 52  | 7  | 10 | 37 | 70  | 83  | 37 |
| 2.172  | 50         | 65  | 9  | 10 | 49 | 87  | 105 | 47 |
| 2.173  | 63         | 76  | 9  | 10 | 57 | 99  | 115 | 56 |
| 2.174  | 80         | 95  | 11 | 16 | 70 | 119 | 145 | 70 |
| 2.175  | 100        | 115 | 11 | 16 | 84 | 138 | 163 | 84 |