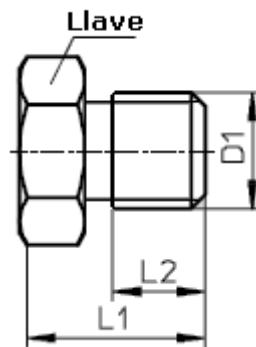
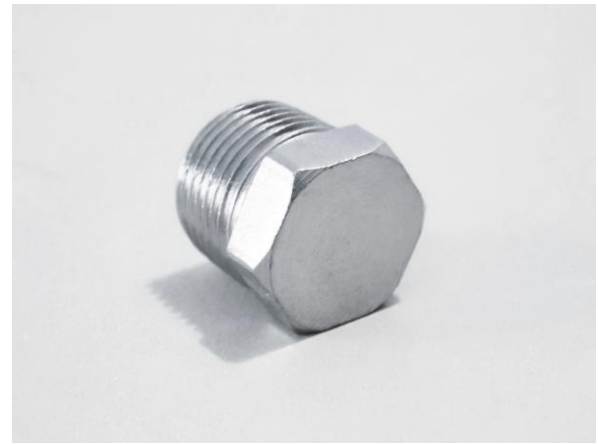


- 1.216 – TA 1/8"
- 1.217 – TA 1/4"
- 1.218 – TA 3/8"
- 1.219 – TA 1/2"
- 1.220 – TA 3/4"

Tapón de acero



CODIGO	MODELO	D1	L1	L2	LLAVE
1.216	TA 1/8"	1/8"	10,7	5,9	11
1.217	TA 1/4"	1/4"	15,7	8,9	13
1.218	TA 3/8"	3/8"	14,6	9	17
1.219	TA 1/2"	1/2"	15,9	9,9	21
1.220	TA 3/4"	3/4"	21,3	9,4	31